

 **RUD**[®]

ROTOGRIP[®]

AUTOMATIC SAFETY AT THE FLIP OF A SWITCH



ROTOGRIP About

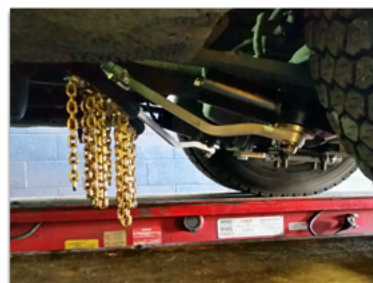
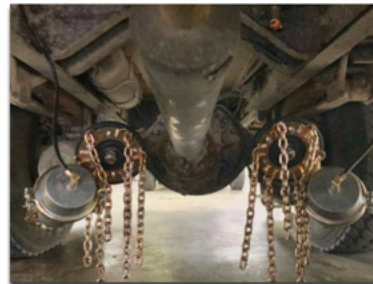


AUTOMATIC SAFETY AT THE FLIP OF A SWITCH

RotoGrip Automatic Snow Chains provide traction on snow and ice, having been designed for vehicles that must be able to travel during hazardous weather conditions. RotoGrip is used for a variety of applications: rescue and emergency vehicles, fire services, public transport vehicles, road haulage, supply and distribution vehicles, and more. Offering superior traction, while increasing safety—RotoGrip is here for you.

HOW IT WORKS

- A switch is installed on the vehicle's dashboard and used to activate the swivel units.
- The swivel units are installed permanently below the rear axle or axles.
- A pneumatic cylinder forces the chain wheel's swing arm down to the vehicle's tire.
- When the chain wheel contacts the vehicle's tire, centrifugal force lifts the chain between the road surface and the tire.
- When the switch is turned off, the air pressure is released and a spring pulls the swing arm to its disengaged position.



FACTS

- Provides traction in forward and reverse.
- Runs safely at speeds up to 30mph.
- Saves time and reduces hazards, as the need to stop the vehicle is not necessary.
- Easy installation with strong, durable materials and a superior design.
- Can be used on 3/4 ton pickups and up—not enough clearance available on cars and SUVs.
- Safest means of traction on snow and ice that is available today.

ROTOGRIP Systems



AUTOMATIC SAFETY AT THE FLIP OF A SWITCH



Classic Version- Tried and true; for use on light to heavy commercial vehicles; air down, spring up system



Compact Solution- Developed for vehicles with limited mounting space— (pneumatic suspension, low tires) air up, air down system; no spring



Light Truck- For light-duty vehicles with or without an on board air system; compact and space-saving design; a powerful electrical linear drive pulls simultaneously on both sides of the wheel; can be activated with air or electric

3 UNIQUE SYSTEMS

Classic, Compact Solution and Light Truck

- Can be switched on or off while in motion.
- Chain bundles with pre-tensioned springs lay the chain strands under the tire like a carpet.
- Flexible springs allow the chains to run smoothly; which is easier on both the systems and tires.
- Chains are effective at low speeds and up to 30mph.
- The profile of the friction ring is specially designed to reduce freezing up.
- Parts are easily replaced.

LET US HELP FIND THE RIGHT ROTOGRIP SYSTEM FOR YOU

Visit us at WWW.RUDCHAINUSA.COM/ROTOSYSTEMS and download the Vehicle Information Sheet. Email it back to us and we will find the best fit for your intended use.

ROTOGRIP Chain Wheels



AUTOMATIC SAFETY AT THE FLIP OF A SWITCH

ROTOGRIP CHAIN WHEELS

- Known for the excellent quality of their materials and construction.
- All chain strands are made of case-hardened alloy steel.
- A variety of chain wheels can be used according to the type of vehicle and intended application.
- Easy to mount.
- Individual parts have an exceptionally long service life and are easy to replace.
- The special profile on the friction ring reduces icing up.

OPTIONS

6-strand wheel, diameter 195mm (7.5")

Robust construction: each chain strand is made of 6.5mm square bar steel and is connected to a bracket welded to the chain disk. Superior traction on snow and ice. Traction at speeds as low as 4-5mph.



8-strand wheel, diameter 150mm (6.0")

8 individually mounted chain strands made of 5mm square steel. Very low profile for light commercial vehicles. Also good on vehicles with very limited space for fitting. Smooth running. Good traction on snow and ice. Traction at speeds as low as 1-2mph.



10-strand wheel, diameter 160mm (6.3")

Used when space is limited for fitting. The chain strands are made of 5.5mm square bar stock and are connected in pairs, welded to the chain disk. Stable design, high abrasion factor. Superior traction on snow and ice. Traction at speeds as low as 3-4mph.



18-strand wheel, diameter 195mm (7.5")

Preferred for use on tires with a diameter greater than 40 inches. Most frequently used type of chain wheel. Exceptionally smooth running. Chain strands made of 4.5mm square bar stock are attached in groups of three rings; connected to the chain disk by a chain link. Traction at speeds as low as 2-3mph.

